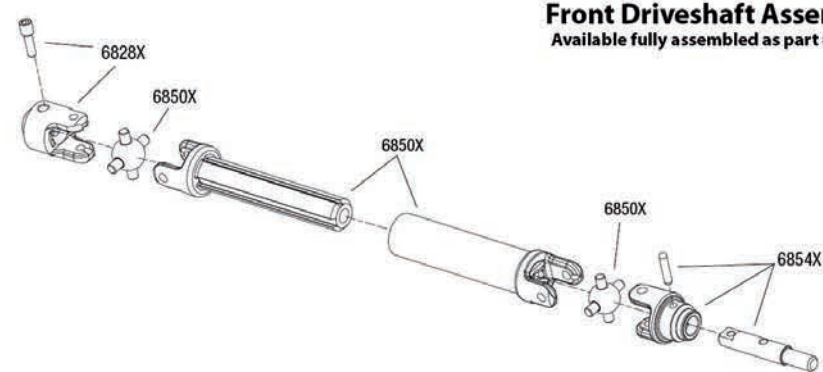


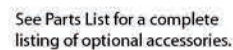
Rear Driveshaft Assembly
Available fully assembled as part #6852X



Assembly

This exploded view diagram illustrates the assembly of a motor. The central component is the motor housing, which features a cooling fan on the left side. To the right of the housing is a gear assembly, including a large gear and a smaller pinion gear. Various screws and bolts are shown being inserted into the housing and gear assembly. The following table lists the parts and their quantities:

Part Number	Description	Quantity
3937	4x12 BCS	4
2535	4x10 CCS	4
3937	4x12 BCS	4
3937	4x12 BCS	4

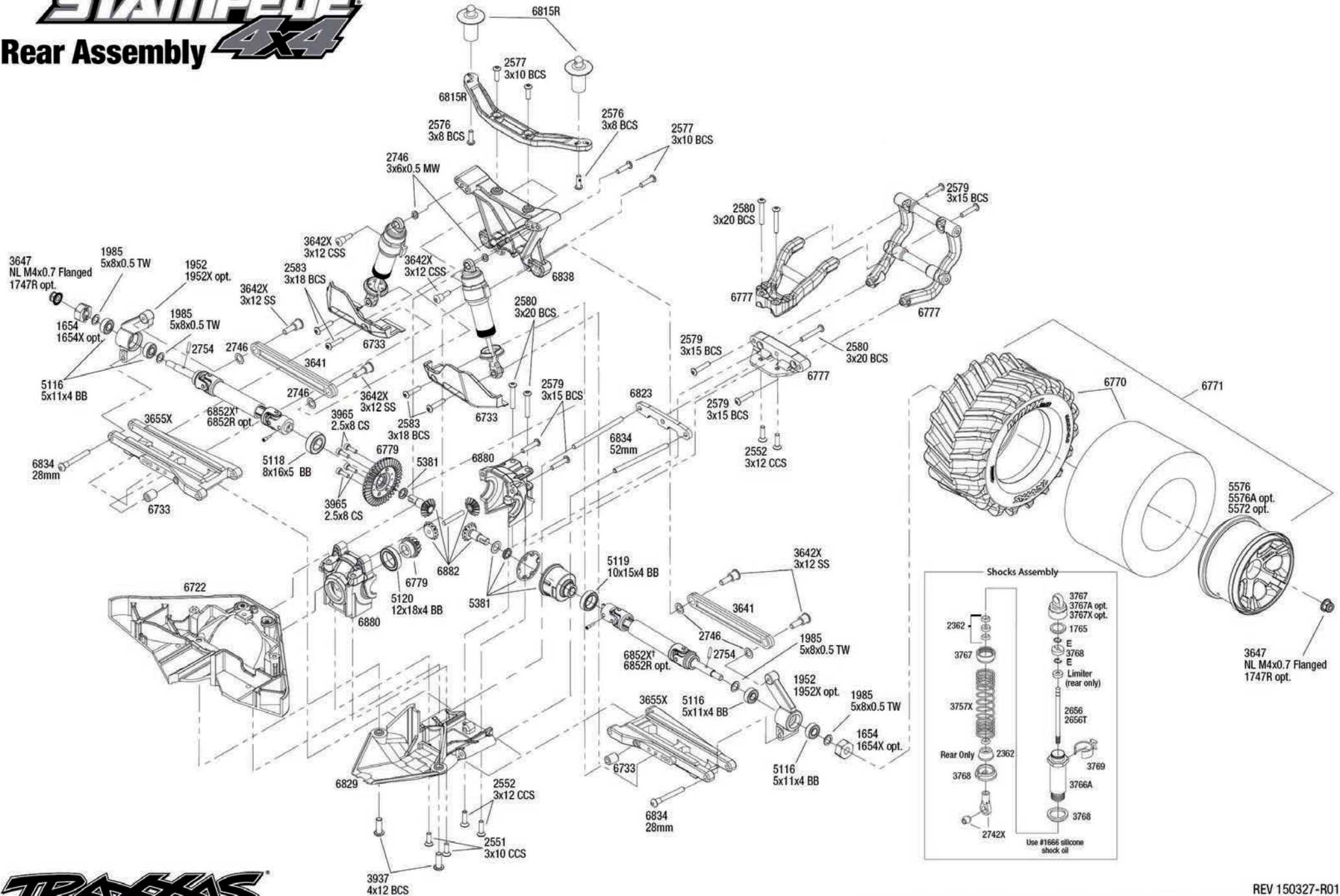


Specifications on this page are subject to change without notice. Every attempt has been made to ensure the accuracy of this drawing, however Traxxas cannot be held responsible for typographical or other errors.

REV 150327-R01

STAMPEDE

Rear Assembly 4x4

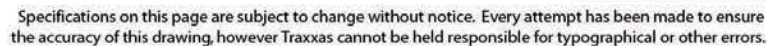


TRAXXAS

See Parts List for a complete listing of optional accessories.

REV 150327-R01
Specifications on this page are subject to change without notice. Every attempt has been made to ensure the accuracy of this drawing, however Traxxas cannot be held responsible for typographical or other errors.

REV 150327-R01
See Parts List for a complete
listing of optional accessories.



STAMPEDE
4x4

Chassis Assembly



Specifications on this page are subject to change without notice. Every attempt has been made to ensure the accuracy of this drawing, however Traxxas cannot be held responsible for typographical or other errors.

See Parts List for a complete listing of optional accessories.

REV 150327-R01

